



Installation Instructions

- ZZP ATS-V Bleeder/Intercooler Tank Kit
- 2016-2019 Cadillac ATS-V



Estimated Installation Time: 30 minutes

Installation Difficulty: 1/5

Kit Contents:

- Bleeder tank assembly
- Silicone hoses
- 12AN ORB plug
- Worm drive clamps
- Mounting hardware

Tools Needed:

- Pliers
- Flat head screwdriver
- Socket set and ratchet
- Allen keys/sockets
- Wrench set or adjustable wrench

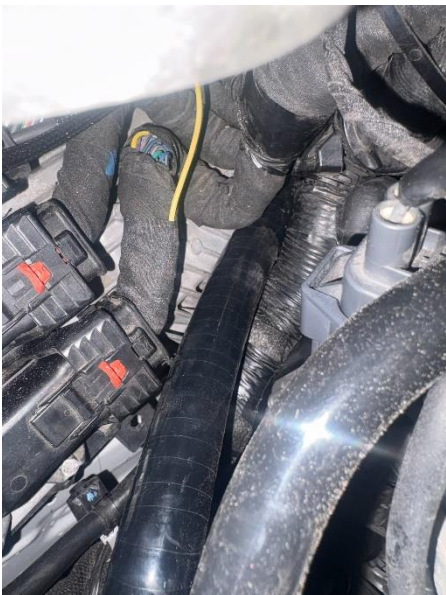
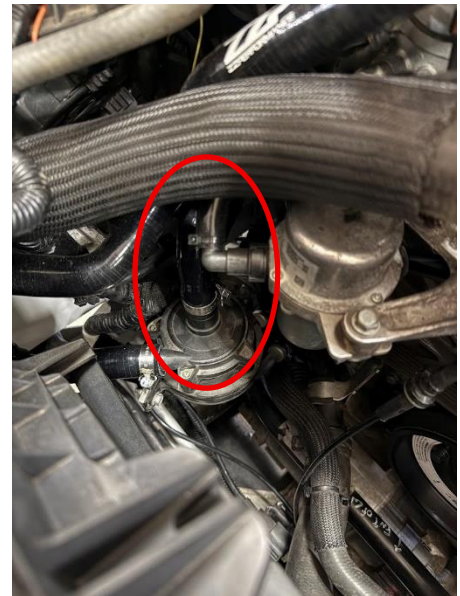


STEP ONE: Remove stock hose

- Our intercooler tank intercepts the stock line that runs from the end plate to the intercooler pump inlet.
- Dealing with the intercooler system means you will spill some coolant. The main heat exchanger has a drain plug if you'd like to fully drain the system (not necessary).
- You will find that removing the intake and possibly the coolant tank make installation much easier.
- We will be removing the top line from the intercooler end plate that runs down to intercooler pump inlet.
- Use your pliers or a constant tension clamp tool to remove the clamps from the two sides of the hose.
- Remove hose. Use pliers to gently grab the ends of the hose and twist if you cannot pull the hose straight off.

STEP TWO: Install bleeder tank outlet hose

- With the stock hose removed we will install the tank outlet hose.
- This hose will run from the pump inlet (the fitting that sticks straight up) up to the bottom fitting on your ZZP tank. It is the longer of the two provided hoses.
- You will want to run the hose from the inlet, next to the ECM, underneath the fuse box and coolant tank, on up to where we'll mount the tank by the chassis bar that runs from the strut tower to the firewall.
- The end of the hose with the longer 90° bend will attach to the intercooler pump. Make sure to place worm clamp on but not tighten.
- The end of the hose with the kink and smaller 90° bend will attach to the tank.
- See photos in steps two through five for proper hose routing.



STEP THREE: Hose 1 routing pictured

STEP FOUR: Hose 1 routing pictured



STEP FIVE: Hose 1 routing pictured



STEP SIX: Remove hardware for mounting of tank

- Our tank will mount in two places, one on the cowl and the other on the chassis brace.
- Remove the pop clip from the cowl and the bolt on the chassis brace where it connects to the strut tower.
- See photos in step six and step seven

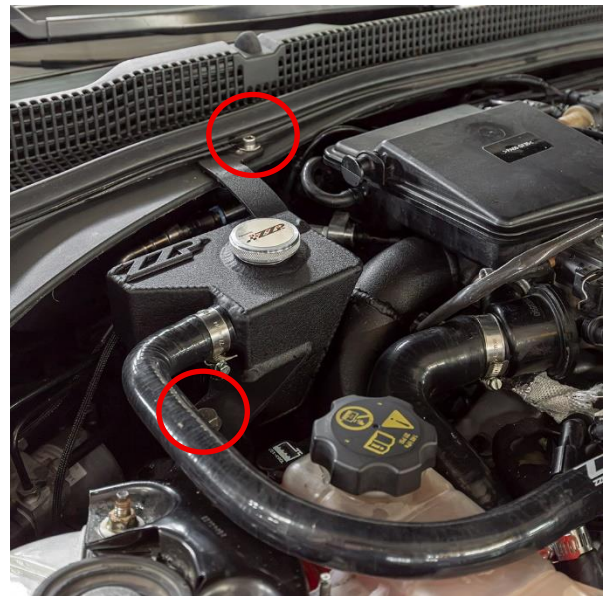


STEP SEVEN: Hardware location photo



STEP EIGHT: Install tank and connect hose #1

- Before installing and mounting the tank you'll want to attach our first hose to the tank. Tighten hose clamp.
- Now you'll want to mount the tank.
- Use the included bolt, washer, and nut to attach the tank to the cowl.
- Rotate and attach the tank to the chassis brace using the stock bolt you removed earlier.
- See photo for installed location.



STEP NINE: Route and install second tank hose

- The second hose will run from the top fitting on the end plate (where you removed the hose earlier) to the upper left fitting on the coolant tank.
- Connect the hose on both ends and route over the coolant tank.
- Tighten clamps.



STEP TEN: Remove stock bleeder fitting

- Our kit includes a black anodized plug that replaces the large silver bleeder fitting on the front of the stock end plate.
- Use a wrench or adjustable pliers to remove the stock fitting.
- Replace and tighten with our plug.



STEP ELEVEN: Fill tank and bleed system

- Fill your newly installed tank (after double checking all connections are tight) with coolant.
- Start the engine so coolant flows into the IC system. Watch the level and fill tank as needed.
- Follow the factory bleeding procedure using the bleed ports on the end plate to ensure all of the air is out of the system.
- It is a good idea to check the fluid level in the tank periodically.
- You are now complete. Enjoy your new ZZP intercooler tank. Go Fast Not Broke!