

ZZPERFORMANCE

Installation Instructions
ZZP Sonic Shift Cable Clamps



Estimated Installation Time: 30 minutes

Installation Difficulty: 1/5

Kit Contents:

- Bottom cable clamp
- Bottom clamp cap
- Side cable clamp
- 2x clamp inserts
- 3x button head bolts
- 1x retaining ring
- 6x set screws
- ZZP assembly lube

Tools Needed:

- 10mm socket
- 6" extension
- Ratchet
- Flat head screw driver
- Hex key set (allen wrenches)
- Pliers

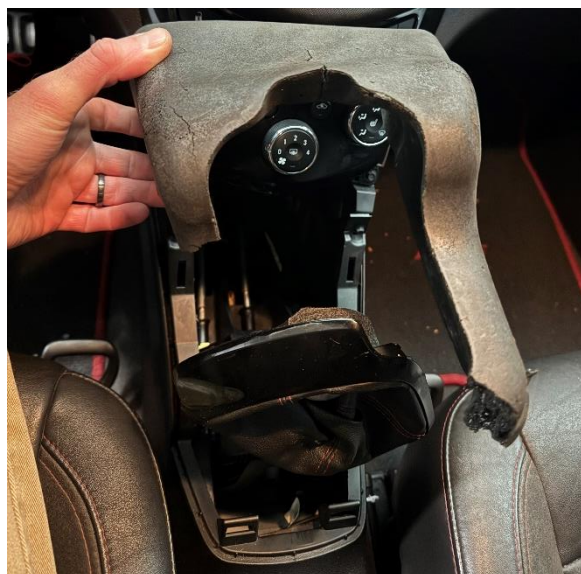


STEP ONE:

- Remove shifter boot trim.

STEP TWO:

- Remove shifter surround trim.

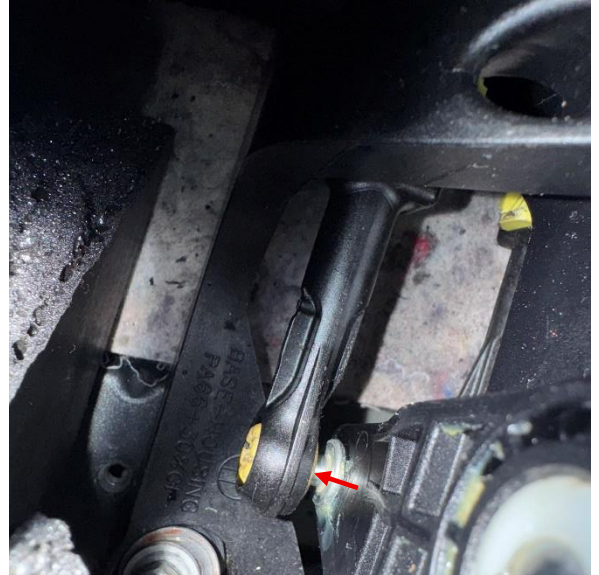


STEP THREE:

- Remove center console sound insulation.

STEP FOUR:

- Pry the side cable clamp off the shifter side arm with a screwdriver.

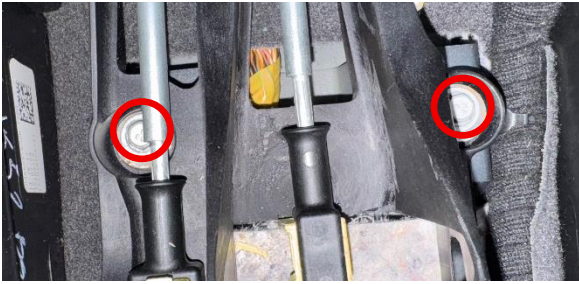
**STEP FIVE:**

- Push the bottom cable clamp off the bottom of the shifter using a screwdriver or pliers.

STEP SIX:

- Pull forward on the shift cable locking tabs and pull the cables up to release the shift cables from the shifter base.



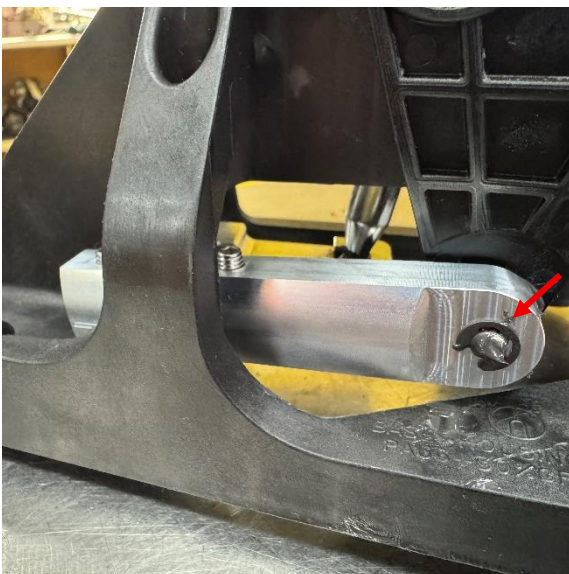


STEP SEVEN:

- Remove the four 10mm bolts that hold the shifter base onto the car.
- After removing the bolts, remove the shifter base assembly from the car.

STEP EIGHT:

- Remove cable clamps from the shift cables by squeezing on the bottom two sides and pulling on the lock piece from the other side.

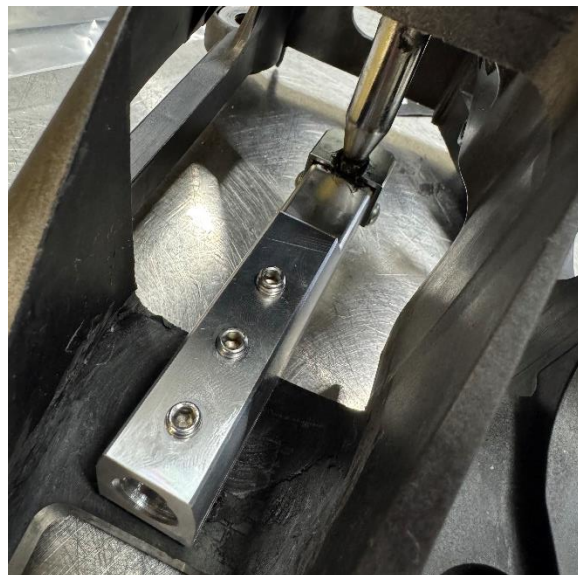


STEP NINE:

- Apply grease to the rod/arm for the side cable clamp and the side face of the cable clamp that will be touching the shifter arm.
- Install side cable clamp onto the shifter arm using the provided retaining ring.
- Push the retaining ring on using a screwdriver to ensure it is fully seated.
- Make sure the set screws are facing up.

STEP TEN:

- Apply grease to the ball socket of the shifter and the cable clamp.
- Install the bottom cable clamp onto the shifter rod.
- It may be tight at first. Rotate the billet cable clamp around the shifter rod to allow the ball socket to wear in.



STEP ELEVEN:

- Install the cap over the ball socket.
- If the bolt holes do not line up, the shifter is not fully worn in yet.
- Install the three provided screws to secure the cap onto the ball socket.

STEP TWELVE:

- Install the shifter base back into the car.
- Before installing the bolts, insert the shift cable ends into the cable clamps.
- Tighten the four 10mm bolts that secure the shifter base to the car.
- Push down on the shift cables to resecure the clips that hold them onto the shifter base.





STEP THIRTEEN:

- Install both inserts into the clamps on top of the cable ends until they are flush with the clamp body.
- Make sure the transmission is in neutral and center the shifter to its neutral position.
- Tighten the set screws to press the inserts against the cable ends, securing the shift cables onto the cable clamps.
- Check to ensure all gears can be fully engaged and shifter is operating smoothly.
- It may be necessary to loosen the set screws and readjust the shifter position so that all gears engage easily.

STEP FOURTEEN:

- Reinstall all center console trim and shifter boot.

